

**MEDI-STAT MEDICINE STATION  
MODIFIED  
48" Wide**

(9/77)

P-763619-001

# Modified MEDI-STAT Medicine Station

## TABLE OF CONTENTS

Section	Paragraph	Title	Page No.	Frame No.
1		GENERAL INFORMATION .....	1-1	A-5
	1-1	APPLICATION AND DESIGN .....	1-1	A-5
2		OPERATING INSTRUCTIONS .....	2-1	A-6
	2-1	GENERAL .....	2-1	A-6
	2-2	FLUORESCENT LIGHT .....	2-1	A-6
	2-3	TOWEL DISPENSER .....	2-1	A-6
	2-4	SOAP DISPENSER .....	2-1	A-6
	2-5	REFRIGERATOR .....	2-1	A-6
	2-6	HYPNOTIC-NARCOTIC COMPARTMENT .....	2-1	A-6
3		PREVENTIVE MAINTENANCE .....	3-1	A-8
	3-1	GENERAL .....	3-1	A-8
	3-2	PERFORMANCE VERIFICATION .....	3-1	A-8
	3-3	CLEANING .....	3-1	A-8
4		TROUBLESHOOTING .....	4-1	A-10
	4-1	HELPFUL HINTS .....	4-1	A-10
	4-2	THE TROUBLESHOOTING CHART - EXPLANATION OF ITS CONTENTS .....	4-2	A-11
		TABLE 4-1. MEDICINE STATION TROUBLESHOOTING CHART..	4-3	A-12
5		COMPONENT REPAIR AND REPLACEMENT .....	5-1	A-14
	5-1	GENERAL .....	5-1	A-14
	5-2	REFRIGERATOR .....	5-1	A-14
	5-3	RED WARNING LIGHT ACTUATOR SWITCH .....	5-2	B-1
	5-4	HYPNOTIC-NARCOTIC COMPARTMENT .....	5-2	B-1
	5-5	RED WARNING LIGHT .....	5-3	B-2
	5-6	FLUORESCENT LIGHT ASSEMBLY .....	5-3	B-2
6		EXPLODED VIEWS AND PARTS LISTS .....	6-1	B-4

## LIST OF ILLUSTRATIONS

Fig. No.		Page No.
2-1	LOCATION OF COMPONENTS .....	2-2
3-1	PREVENTIVE MAINTENANCE .....	3-2
4-1	ELECTRICAL SCHEMATIC .....	4-4
6-1	MAJOR COMPONENTS .....	6-2
6-2	MINOR COMPONENTS .....	6-4
6-3	ELECTRICAL .....	6-5
6-4	NARCOTIC CABINET ASSEMBLY .....	6-6
6-5	PLUMBING .....	6-8
6-6	COMPRESSOR ASSEMBLY .....	6-10
6-7	REFRIGERATOR .....	6-11

## SAFETY PRECAUTIONS

The following are personnel (WARNINGS) **safety precautions** to be observed when operating or servicing this Medicine Station. The page or pages on which they appear in the text of this manual is indicated by the number in the lower right-hand corner of the **precaution**.

**WARNING: REFRIGERANT CHARGE IS TOXIC; DO NOT ATTEMPT TO CHANGE IT.**

4-1, 5-1,

**WARNING: BE SURE TO DISCONNECT ELECTRICAL POWER TO THE MEDICINE STATION BEFORE PERFORMING MAINTENANCE ON ANY OF THE ELECTRICAL COMPONENTS.**

5-1

## **SECTION 1**

### **GENERAL INFORMATION**

#### **1-1. APPLICATION AND DESIGN**

The product literature included in this section contains factual data relating to the principal descriptive and identifying characteristics of particulars for the Modified 46" MEDI-STAT Medicine Station. The literature is informational rather than instructional. It provides and conveys, textually and illustratively, a general concept of the equipment, its purpose, capabilities, limitations, and technical specifications.

## SECTION 2

### OPERATING INSTRUCTIONS

#### 2-1. GENERAL

The following instructions are intended as a guide for servicemen to use when: (1) instructing operators in techniques designed to ensure optimum equipment performance; and (2) verifying the validity of operator complaints. Reference should be made to Section 4, TROUBLESHOOTING, if the Medicine Station is not operating properly. Refer to Section 1, GENERAL INFORMATION, for capabilities of the equipment.

Figure 2-1 shows the Medicine Station components and control in their approximate locations. It is provided as a guide to identification and location of the various items.

#### 2-2. FLUORESCENT LIGHT

To operate fluorescent light, refer to Figure 2-1 for location of self-contained, toggle-starter switch.

#### 2-3. TOWEL DISPENSER

##### To Refill Towel Dispenser

1. Rotate pawl fasteners on each side of opening counterclockwise.
2. Pull towel dispenser forward.
3. Slide back spring-loaded follower block, and insert fresh towels. Folded towel is 3 x 9 $\frac{3}{4}$  inches.
4. Be sure that flap of first towel extends through dispenser opening.
5. Slide dispenser into place, and rotate pawl fasteners clockwise until snug.

#### 2-4. SOAP DISPENSER

##### To Refill Soap Dispenser

1. Lift up and remove dispensing head, pump section and tubing assembly.

2. Fill the reservoir. It holds four fluid ounces of liquid soap. Do **not** fill above pump-support shoulder.

3. Reassemble dispensing head, pump section and tubing assembly.

#### 2-5. REFRIGERATOR

##### To Adjust Temperature

1. Remove snap-in access panel.
2. Rotate thermostat control knob to desired setting. The refrigerator is self-defrosting but may be manually defrosted by setting the thermostat to DEFROST.
3. Replace the access panel.

#### 2-6. HYPNOTIC-NARCOTIC COMPARTMENT

##### To Open

1. Unlock outer door. Red warning light comes on when outer door is unlocked.
2. Swing out door to an approximate 30 degree angle.
3. Using key and grasping edge of door with other hand, gradually push door up until it is fully retracted.
4. Push door up and back into opening for storage.
5. Unlock inner doors and open them. Key cannot be removed from lock when it is unlocked.

##### To Close

1. Close and lock inner doors.
2. Remove key from lock.
3. Pull outer door out and down.
4. Lock outer door. Red warning light will go off.

Modified MEDI-STAT Medicine Station

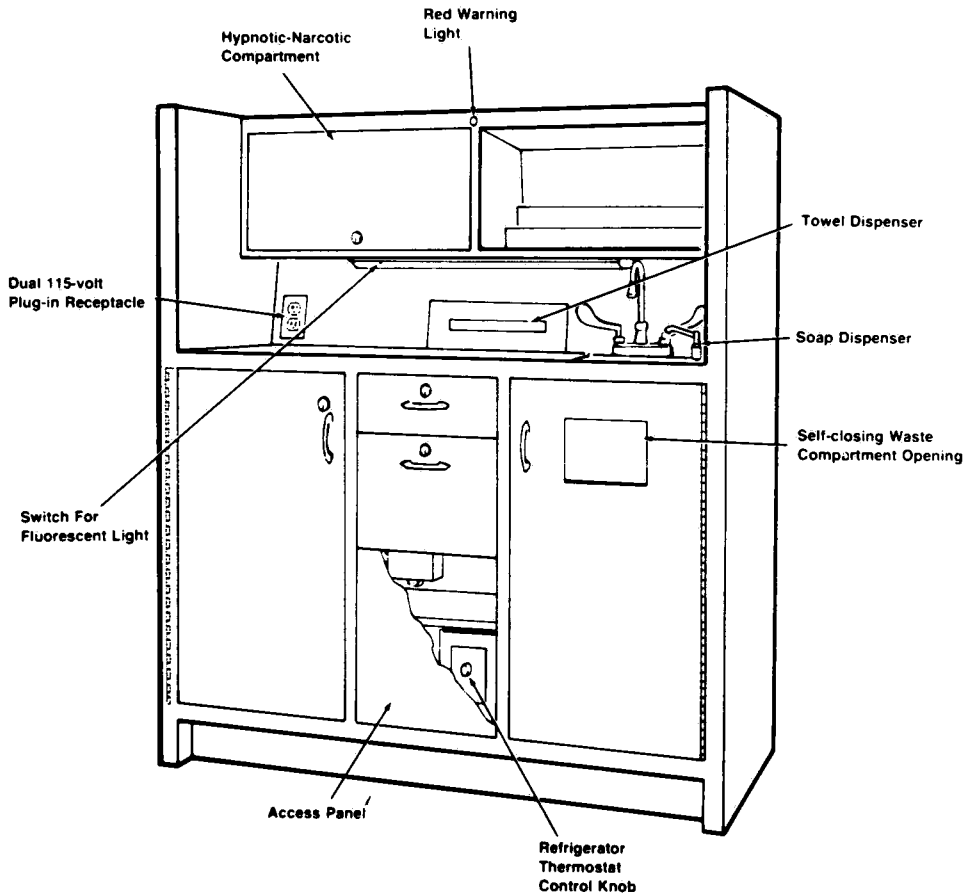


Figure 2-1. LOCATION OF COMPONENTS.

## SECTION 3

### PREVENTIVE MAINTENANCE

#### 3-1. GENERAL

The following operations with the exception of Paragraph 3-4 should be performed periodically to properly maintain a Medicine Station. The frequency, unless otherwise indicated, is determined by the usage. Refer to Section 4, TROUBLESHOOTING, should a problem occur or if the Medicine Station operation is not as described in Paragraph 3-2.

#### 3-2. PERFORMANCE VERIFICATION

1. Inspect the Medicine Station for any sign of damage, poor electrical or plumbing connections or misaligned parts.
2. Operate the water faucet and soap dispenser and inspect the drain line (see Fig. 3-1). Be sure they do not leak or drip.
3. Operate fluorescent light (see Fig. 3-1). Be sure it is working properly.
4. Remove the snap-in access panel adjacent to the refrigerator (see Fig. 3-1). Turn the thermostat control knob to its normal operating position. Check for proper compressor operation. Be sure the refrigerator door gasket seals tightly against the door frame.
5. Be sure that all locks are working properly.
6. Open and close the storage drawers. Check for smoothness of operation. Be sure that all stops are so rotated as to prevent accidental drawer removal.
7. Be sure that the Red warning light glows when the hypnotic-narcotic compartment outer door is unlocked. Open the outer and inner doors, then depress the outer door switch with a finger. The Red warning light should go off.

#### 3-3. CLEANING

**NOTE:** When using *AMSCO STAINLESS STEEL CLEANER & POLISH* or *AMSCO PRY Cleaner*, rub in a back-and-forth motion (in the same direction as the surface grain). Do not rub with a rotary or circular motion. Do not use these cleaners on painted surfaces.

##### Quarterly

1. Remove snap-in access panel and drawer directly above access panel (see Fig. 3-1).
2. Remove top cover from compressor assembly.
3. With a vacuum cleaner wand, remove any lint or dust particles that may have become trapped in condensing-coil fins.
4. Clean access panel, then replace cover, access panel and drawer.
5. Remove any lint and dust from subbase openings beneath the refrigerator.

##### As Necessary

1. Use *AMSCO STAINLESS STEEL CLEANER & POLISH* on all stainless-steel surfaces. Apply the cleaner with a damp cloth or sponge, thoroughly wipe off and then polish with a clean, dry cloth. Use *AMSCO PRY Cleaner* to remove stubborn stains.
2. Use a mild detergent solution such as Calgonite<sup>®</sup> (Calgon Corp.) to wash all nonstainless-steel surfaces. Rinse with tap water using a sponge or damp cloth and wipe dry with a lint-free cloth.



Modified MEDI-STAT Medicine Station

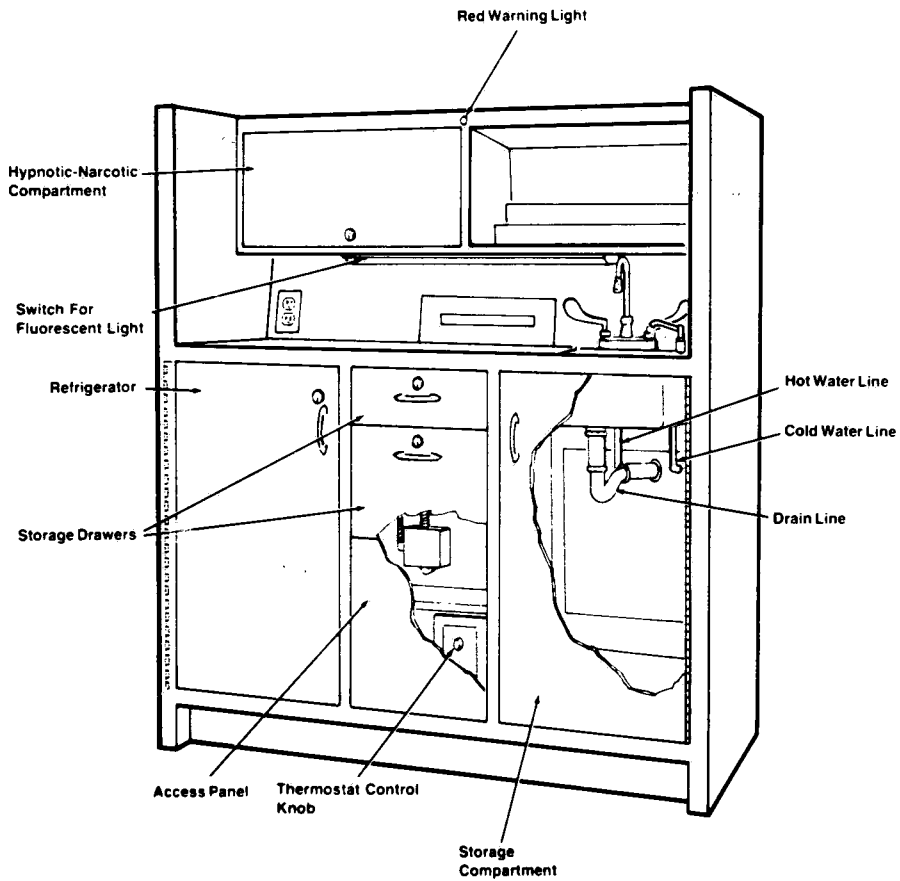


Figure 3-1. PREVENTIVE MAINTENANCE.

## SECTION 4

### TROUBLESHOOTING

This section contains detailed information for locating and correcting the cause of Medicine Station malfunctions.

#### 4-1. HELPFUL HINTS

1. Use the operating procedures presented in Section 2 to verify the trouble symptom.
2. Refer to paragraph 4-2 and the TROUBLESHOOTING CHART (Table 4-1) after symptom has been verified.
3. Use the electric schematic (Fig. 4-1) as aid in understanding system operation and how the malfunction of a specific component would affect it.
4. Refer to the following guide for examples of what to look for and what to do when you are doing the actual troubleshooting. Also refer to Section 5, COMPONENT REPAIR AND REPLACEMENT, if necessary.

##### • Water Supplies

- a. Be sure that building-supply valves are fully open.

- b. Be sure that supply pressure is the proper value.
- c. Inspect the entire system; correct all leaks.

##### • Electrical System

- a. Using the electrical schematic, determine the circuit and component function. Correct all loose wires or improper connections.
- b. Inspect the individual components, and adjust, repair or replace them as necessary.

##### • Drain

Be sure that drain line is clear; clean it if necessary.

##### • Refrigeration System

**WARNING: REFRIGERANT CHARGE IS TOXIC: DO NOT ATTEMPT TO CHANGE IT.**

Do **not** attempt to repair compressor or change refrigerant charge. Have these done by a qualified refrigeration serviceman.

## 4-2. THE TROUBLESHOOTING CHART — EXPLANATION OF ITS CONTENTS

COLUMN HEADING	EXPLANATION
<b>TROUBLE</b>	Select the problem you think is most appropriate to the particular trouble symptom.
<b>ARE CONDITIONS AS FOLLOWS?</b>	<p>This column lists the specific conditions that should be checked to isolate and correct the one causing the malfunction. The conditions are presented in the order in which they would most likely have caused the malfunction. Check them in the order given. Refer to Paragraph 4-1 for what to do if the conditions are not as described.</p> <p><b>NOTE:</b> If the symptom for a malfunction is established as mechanical, the electrical components may be omitted and vice versa.</p>
<b>WHERE TO FIND ITEMS IN MANUAL</b>	Where applicable, the particular paragraph (P) or illustration (F) in which a given component may be found is provided in this area. An index number after a figure number denotes the specific component.

**TABLE 4-1.**  
**MEDICINE STATION TROUBLESHOOTING CHART**

<b>TROUBLE</b>	<b>ARE CONDITIONS AS FOLLOWS?</b>	<b>WHERE TO FIND ITEM IN MANUAL</b>
1. Fluorescent Light does <b>not</b> operate	A. Power input (120 V) is hot B. Light switch is closed C. Fluorescent lamp is <b>not</b> burned out D. Ballast is energized	F6-2. 12 F6-2. 11; P4-6 F6-2. 12
2. Narcotic Compartment Red Warning Light does <b>not</b> come on when the outer door is unlocked	A. Power input (120 V) is hot B. Outer door switch is closed C. Bulb is <b>not</b> burned out D. Socket is energized	F6-4. 23 F6-1. 1; P4-5 F6-1. 1
3. Soap Dispenser does <b>not</b> work	A. Reservoir is filled with liquid soap B. Dispenser is <b>not</b> clogged C. Dispenser pump is operating	F6-5. 27 F6-5. 23 F6-5. 25
4. Compressor does <b>not</b> start when Refrigerator is turned on (NOTE: Be sure to follow WARNING and instructions in Paragraph 4-1 under "Refrigeration System.")	A. Power input (120 V) is hot B. Compressor power cord and feed line are plugged in C. Timer is operable D. Thermostat is operable	F6-3; F6-6. 3  F6-6. 8; P4-2 F6-6. 6; P4-2
5. Compressor operates but Refrigerator does <b>not</b> maintain set temperature (NOTE: Be sure to follow WARNING and instructions in Paragraph 4-1 under "Refrigeration System.")	A. Refrigerator door gasket is <b>not</b> deformed, brittle or cracked B. Condenser fan is operating properly C. Condenser coil is clean D. Timer is operable E. Thermostat is operable	F6-7. 6; P4-2  F6-6 F6-6. 1; P3-3 F6-6. 8; P4-2 F6-6. 6; P4-2

Modified MEDI-STAT Medicine Station

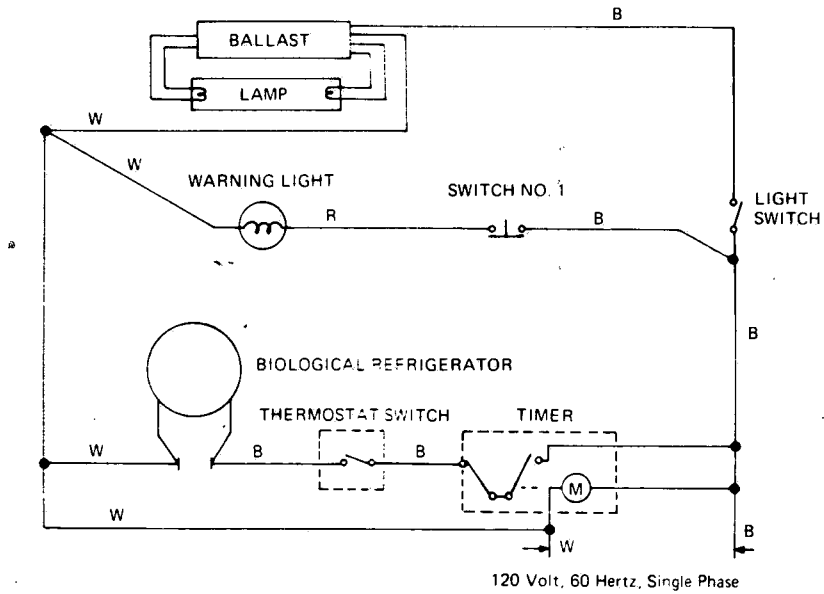


Figure 4-1. ELECTRICAL SCHEMATIC.

## SECTION 5

### COMPONENT REPAIR AND REPLACEMENT

**WARNING: BE SURE TO DISCONNECT ELECTRICAL POWER TO THE MEDICINE STATION BEFORE PERFORMING MAINTENANCE ON ANY OF THE ELECTRICAL COMPONENTS.**

#### 5-1. GENERAL

This section includes instructions for the adjustment, disassembly, repair, and replacement of selected Medicine Station components. Exploded views showing the various parts and assemblies referred to in this section are included in Section 6.

#### 5-2. REFRIGERATOR

**WARNING: REFRIGERANT CHARGE IS TOXIC: DO NOT ATTEMPT TO CHANGE IT.**

##### Compressor and Refrigerant Charge

Only a qualified refrigeration serviceman should

- repair compressor,
- replace compressor, or
- change refrigerant charge

##### Replacing Door Gasket (Fig. 6-7)

1. Lift the gasket (6) slightly to expose the 6-32 screws (11) which secure the gasket and the inside plate (7) to the door (9).

2. Remove the screws, gasket and inside plate.

3. Clean the area that makes contact with gasket.

4. Place new gasket on the plate, and position them on the door.

5. Secure the gasket and plate to the door with screws removed in step 2.

##### Adjusting Timer Cam (Fig. 6-6)

1. Disconnect electrical power to Medicine Station.

2. Remove the snap-in access panel adjacent to the refrigerator.

3. Rotate the thermostat control knob to OFF. Remove the knob and control housing face plate.

4. Rotate the cam on the timer until the notch in the cam is opposite the switch actuator (switch is actuated).

5. Replace face plate, knob and access panel.

6. Restore electrical power to Medicine Station.

##### Replacing Defrost Timer (Fig. 6-6)

1. Disconnect electrical power to Medicine Station.

2. Remove the snap-in access panel adjacent to the refrigerator.

3. Rotate the thermostat control knob to OFF. Remove the knob and control housing face plate.

4. Disconnect and remove the timer.

5. Rotate the cam on the replacement timer until the notch in the cam is opposite the switch actuator (switch is actuated).

6. Install and connect the replacement timer.

7. Restore electrical power to Medicine Station.

8. Temporarily replace the thermostat knob. Rotate it to its normal operating position. The compressor should start immediately. Be sure it is operating properly.

9. Remove the knob and replace the face plate.

10. Replace knob and access panel.

### Replacing Thermostat (Fig. 6-6)

1. Disconnect electrical power to Medicine Station.
2. Remove the snap-in access panel adjacent to the refrigerator.
3. Rotate the thermostat control knob to OFF. Remove the knob and control housing face plate.
4. Disconnect and remove the thermostat.
5. Install and connect the replacement thermostat.
6. Replace face plate, knob and access panel.
7. Restore electrical power to Medicine Station.

### Repositioning Defrost Timer (Fig. 6-6)

If vibration causes the timer to malfunction (causing the refrigerator to ice up), reverse the position of the timer as follows:

1. Disconnect electrical power to Medicine Station.
2. Remove the snap-in access panel adjacent to the refrigerator.
3. Rotate the thermostat control knob to OFF. Remove the knob and control housing face plate.
4. Remove two screws holding defrost timer in place.
5. Invert the timer, making sure timer bracket is pointing upward (i.e., motor is on top); it is not necessary to disconnect any wires. Reconnect the timer.
6. Replace face plate, knob and access panel.
7. Restore electrical power to Medicine Station.

### 5-3. RED WARNING LIGHT ACTUATOR SWITCH

#### Replacement (Fig. 6-1)

1. Disconnect electrical power to Medicine Station.
2. Open outer door and both inner doors.
3. From inside the narcotic cabinet, remove four screws from back wall that secure cabinet to upper section.
4. Slide narcotic cabinet forward halfway.

5. Remove four screws and lockwashers holding the actuator switch assembly to underside of narcotic cabinet.

6. Pull down actuator switch assembly.

7. Remove two sets of bolts and nuts from microswitch.

8. Remove wire from "NC" terminal of microswitch and connect it to "NC" terminal of replacement microswitch.

9. Remove wire from "COM" terminal of microswitch and connect it to "COM" terminal of replacement microswitch.

10. Assemble new microswitch to switch assembly plate with two sets of bolts and nuts.

11. Install actuator switch assembly to underside of narcotic cabinet with four screws and lockwashers.

12. Slide narcotic cabinet back into upper section.

13. Tightly secure narcotic cabinet to upper section with four screws.

14. Close inner doors and outer door.

15. Lock outer door.

16. Reconnect electrical power to Medicine Station. Red Warning Light should be off.

17. Unlock outer door; Red Warning Light must come on.

### 5-4. HYPNOTIC-NARCOTIC COMPARTMENT

#### Replacement (Fig. 6-4)

The following compartment components can be replaced without first removing compartment:

- left-hand, inner-door assembly
- right-hand, inner-door assembly
- inner door lock
- outer door lock
- lock spacer

To replace the retainers, lever assemblies, bearings or outer door, the compartment must be removed as follows:

1. Disconnect electrical power to Medicine Station.
2. Open outer door and both inner doors.
3. Remove four 1/4-20 cap screws from inside back wall of the compartment.
4. Slide compartment forward until it clears the main housing.
5. Any of the following components can be removed:
  - retainers
  - lever assemblies
  - outer door
  - after removing outer door, bearings
6. Slide compartment into main housing and secure with the four 1/4-20 cap screws.
7. Close inner doors and outer door.
8. Restore electrical power to Medicine Station.

#### 5-5. RED WARNING LIGHT

##### Removal of Warning Light Assembly (Figs 6-1 and 6-4)

1. Disconnect electrical power to Medicine Station.
2. Open outer door and both inner doors.
3. From inside the narcotic cabinet, remove four screws from back wall that secure cabinet to upper section.
4. Slide narcotic cabinet forward halfway.
5. Pull out two wires leading to actuator switch assembly from underneath the cabinet until two wire nuts are exposed.
6. Remove the two wire nuts.
7. Slide out narcotic cabinet and place it on counter-top.
8. Remove defective warning light assembly.

9. Install replacement warning light assembly.
10. Lift and slide narcotic cabinet halfway into upper section case.
11. Using wire nuts, connect wires underneath cabinet to actuator switch assembly. Be sure to match wire colors.
12. Position excess wire into upper section case underneath narcotic cabinet.
13. Slide narcotic cabinet all the way into upper section.
14. Tightly secure narcotic cabinet to upper section with four screws.
15. Close inner doors and outer door.
16. Lock outer door.
17. Reconnect electrical power to Medicine Station. Red Warning Light should be off.
18. Unlock outer door: Red Warning Light must come on.

##### Replacement of Bulb

1. Unscrew red lens warning light assembly.
2. Remove defective plug-in type bulb.
3. Install replacement bulb.
4. Replace red lens.

#### 5-6. FLUORESCENT LIGHT ASSEMBLY

##### Replacement of Assembly (Fig. 6-2)

1. Disconnect electrical power to Medicine Station.
2. Remove snap-in diffuser from fluorescent light.
3. Disassemble fluorescent light housing from Medicine Station by removing two 8-32 screws.
4. Disconnect wiring to housing at wire nuts.
5. Connect wires to replacement light assembly housing using wire nuts.
6. Assemble housing to Medicine Station using the two 8-32 screws.



### Modified MEDI-STAT Medicine Station

7. Install snap-in diffuser on fluorescent light.

8. Restore electrical power to Medicine Station.

3. Remove defective lamps, switch, ballast or starter from fluorescent light fixture.

#### **Replacement of Lamps, Switch, Ballast or Starter (Fig. 6-2)**

1. Disconnect electrical power to Medicine Station.

2. Remove snap-in diffuser from fluorescent light.

4. Install replacement component(s).

5. Install snap-in diffuser on fluorescent light.

6. Restore electrical power to Medicine Station.

## SECTION 6

## EXPLODED VIEWS AND PARTS LISTS

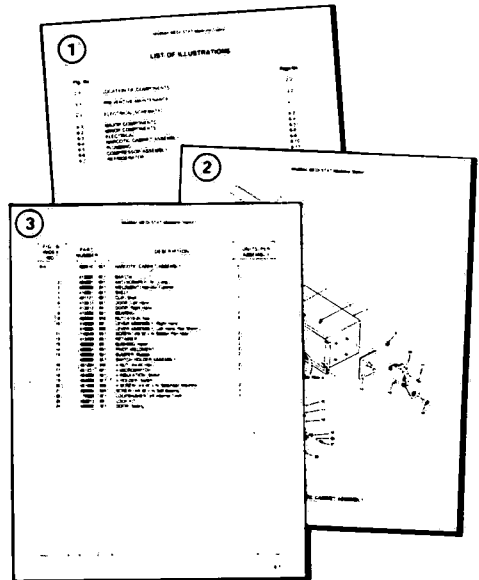
Assemblies and components of the Modified Medicine Station are illustrated and identified on the following pages. The part number, the description and the quantity required for each usage is given. Each indentation in the description represents the assembly level. The UNITS PER ASSEMBLY column is specific for the given assembly or subassembly level.

Part numbers are assigned neither to parts with little or no maintenance replacement frequency nor to commercial hardware. Such parts are illustrated, however, merely to aid in the various assembly and disassembly procedures covered in this manual. Parts that are not identified should be ordered from AMSCO by description or procured locally as the situation dictates. When ordering by description, include the part number of the assembly on which the part is located.

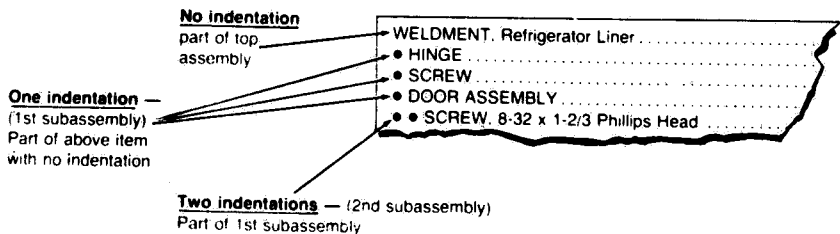
## HOW TO USE THE ILLUSTRATED PARTS BREAKDOWN

- ① Determine the function and application of the part required. Turn to the List of Illustrations and select the most appropriate title. Note the illustration page number.
- ② Turn to the page indicated and locate the desired part on the illustration.

- ③ From the illustration, obtain the index number assigned to the part desired. Refer to the accompanying description for specific information regarding the part.



## TYPICAL INDENTATION EXAMPLE



# Modified MEDI-STAT Medicine Station

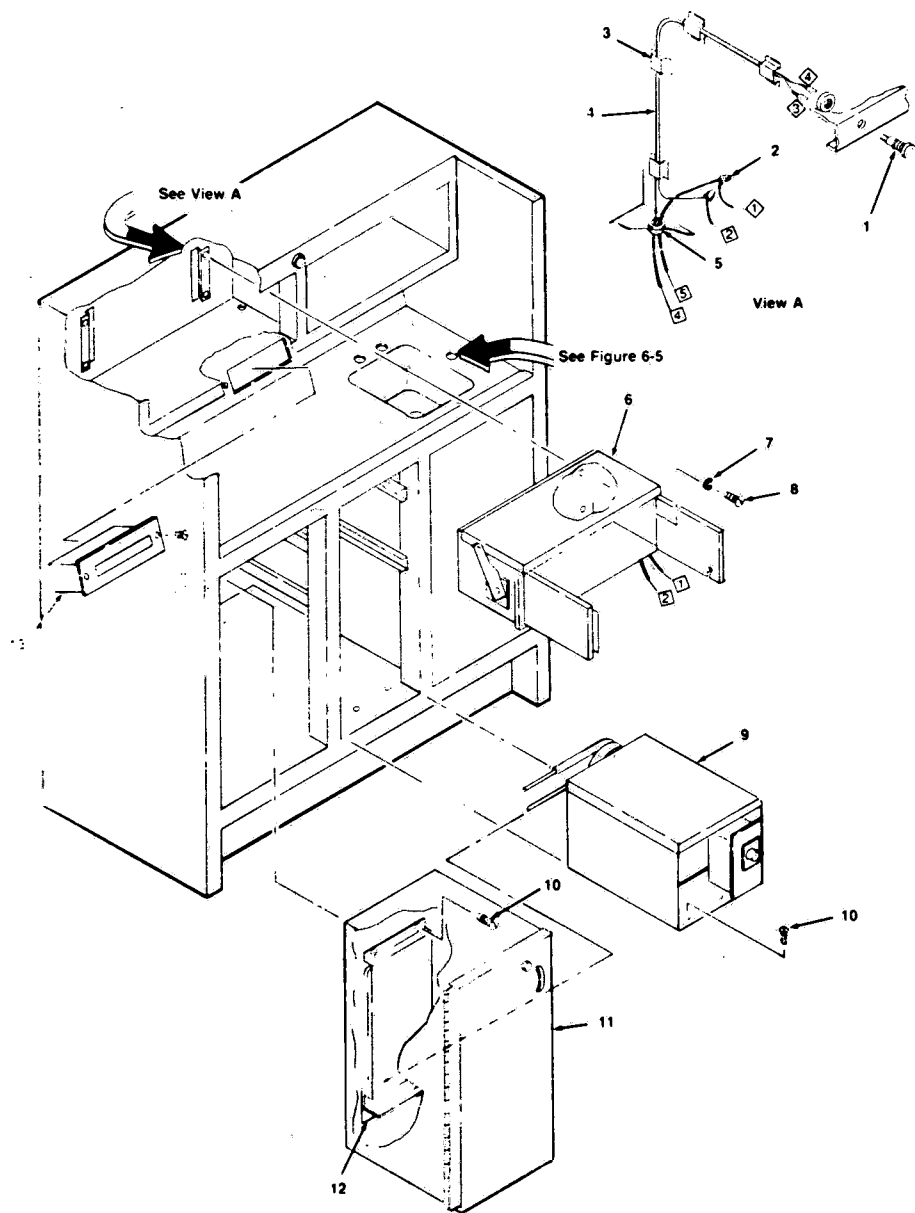


Figure 6-1. MAJOR COMPONENTS.

Modified MEDI-STAT Medicine Station

FIG. & INDEX NO.	PART NUMBER		DESCRIPTION	UNITS PER ASSEMBLY		
6-1-			MAJOR COMPONENTS .....	*		
1		451385 091	LIGHT, Warning .....	1		
2		18538 091	NUT, Wire .....	2		
3		451283 091	CLIP, Wire .....	4		
4		462272 001	BUNDLE, Wire .....	1		
5		77797 091	BUSHING .....	1		
6		426510 001	NARCOTIC CABINET ASSEMBLY (see Figure 6-4) .....	1		
7		412984 025	LOCKWASHER, 1/4 Stainless-steel .....	4		
8		413479 001	SCREW, 1/4-20 x 3/8 Long, Stainless-steel, Round-head .....	4		
9	A	467802 091	COMPRESSOR ASSEMBLY (See Figure 6-6) .....	1		
10	P	430064 045	SCREW, #8-32 x 3/8 Flat-head, Type I .....	4		
11	A	467736 091	REFRIGERATOR (see Figure 6-7) .....	1		
12	A	452520 091	TROUGH, Drain .....	1		
	P	452514 091	TUBING, Drain (Not Shown) .....	1		
13		422665 001	DISPENSER, Towel .....	1		

# Modified MEDI-STAT Medicine Station

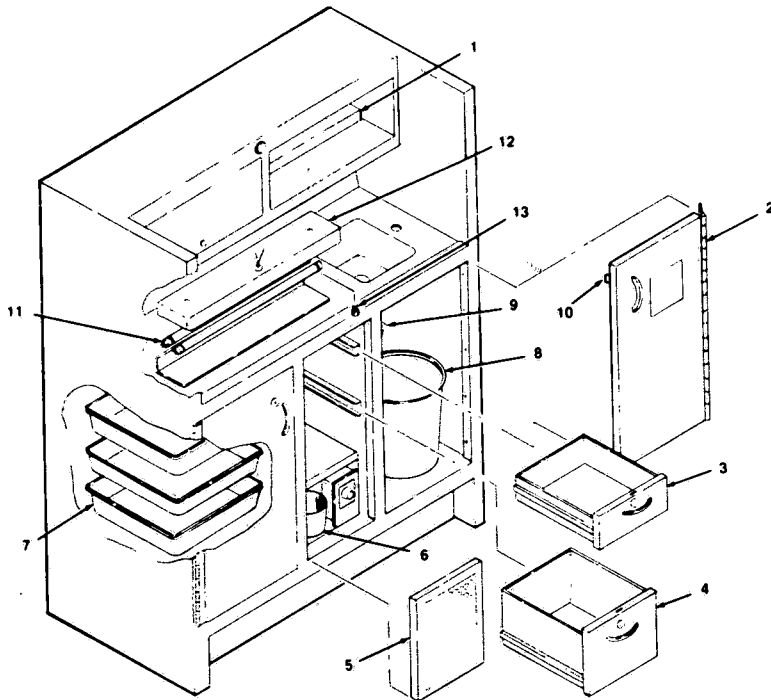


Figure 6-2. MINOR COMPONENTS.

FIG. & INDEX NO.	PART NUMBER			DESCRIPTION	UNITS PER ASSEMBLY			
6-2-				MINOR COMPONENTS .....	*			
1		467700	091	RACK, Medicine .....	1			
2	A	460327	091	DOOR, Sink Compartment .....	1			
3	A	460317	091	DRAWER .....	1			
4	A	461025	003	DRAWER, Storage .....	1			
5		460929	003	COVER, Compressor Access .....	1			
6	P	453090	091	CUP, Evaporator .....	1			
7	P	465484	091	TRAY, Refrigerator .....	3			
8	P	451277	091	BASKET, Waste .....	1			
9	P	43118	045	CATCH, Roller .....	1			
10	P	43119	045	STRIKE .....	1			
11		412963	001	TUBE, Fluorescent — 8 Watts .....	2			
12		417797	091	FLUORESCENT LIGHT .....	1			
13				SCREW 8-32 .....	2			

# Modified MEDI-STAT Medicine Station

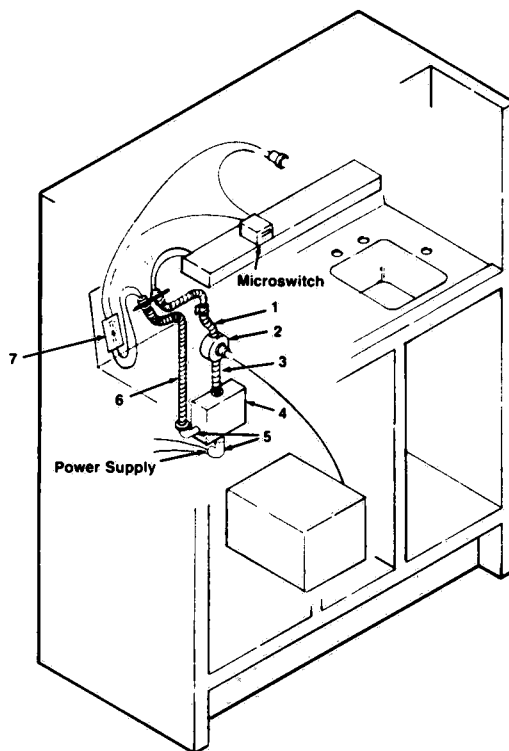


Figure 6-3. ELECTRICAL.

FIG. & INDEX NO.	PART NUMBER	DESCRIPTION	UNITS PER ASSEMBLY
6-3-		ELECTRICAL .....	*
1	466288 020	CONDUIT, 3/8" Diameter x 20" Long. Flexible .....	1
2	452661 001	BOX, Outlet .....	1
3	451927 091	CONDUIT .....	1
4	96726 091	POWER INPUT BOX ASSEMBLY .....	1
5	430037 045	CONNECTOR, 90° .....	2
6	466288 021	CONDUIT, 3/8" Diameter x 30 3/8" Long. Flexible .....	1
7	23345 091	RECEPTACLE .....	1
	23780 091	BOX, Plug-in (Not Shown) .....	1
	430076 091	COVER, Plug-in (Not Shown) .....	1

Modified MEDI-STAT Medicine Station

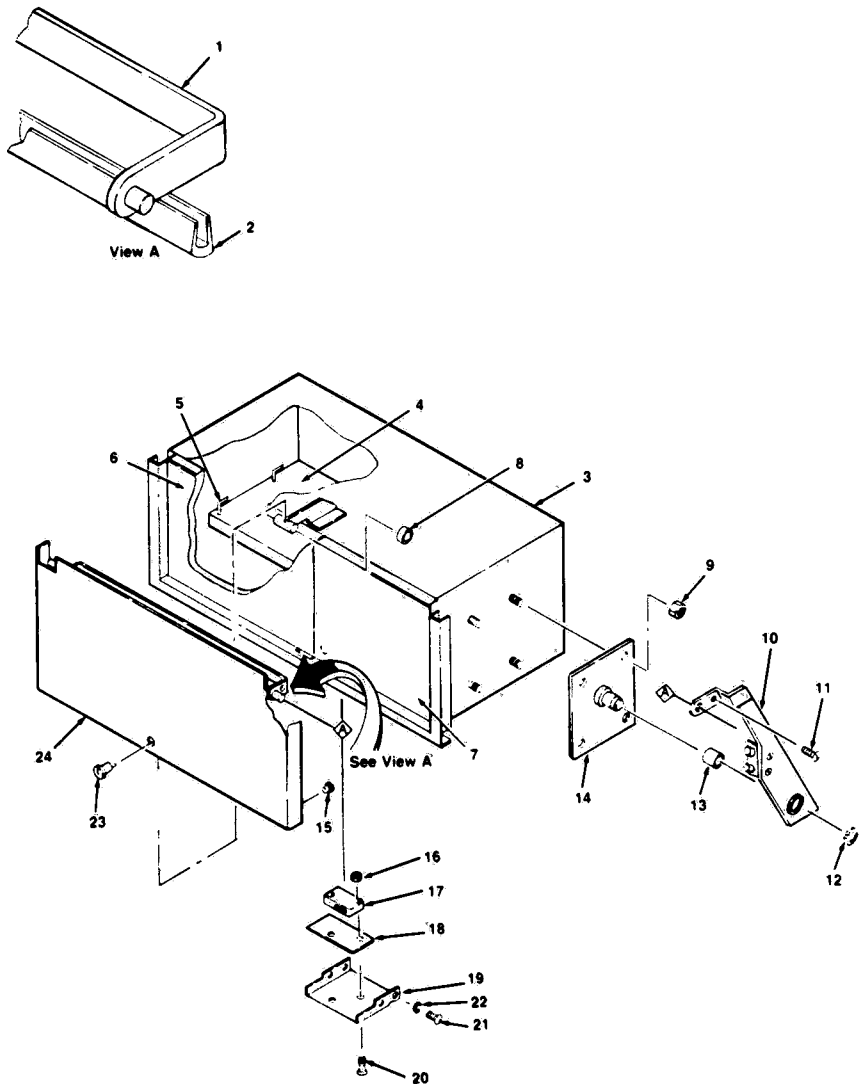


Figure 6-4. NARCOTIC CABINET ASSEMBLY.

Modified MEDI-STAT Medicine Station

FIG. & INDEX NO.	PART NUMBER		DESCRIPTION	UNITS PER ASSEMBLY			
6-4-	426510	001	NARCOTIC CABINET ASSEMBLY .....	*			
1	413385	001	BAR, Tie .....	2			
2	454887	001	ANTI-SCRAPER, 18" Long .....	1			
3	426509	001	WELDMENT, Narcotic Cabinet .....	1			
4	413381	001	SHELF .....	1			
5	431121	091	CLIP, Shelf .....	4			
6	413311	001	DOOR, Left Hand .....	1			
7	413312	001	DOOR, Right Hand .....	1			
8	413383	001	BEARING .....	2			
9	430226	045	NUT, #10-24 Kep .....	8			
10	418028	001	LEVER ASSEMBLY, Right Hand .....	1			
	418028	002	LEVER ASSEMBLY, Left Hand (Not Shown) .....	1			
11	118546	041	SCREW, #8-32 x 3/8 Slotted Pan-head .....	2			
12	413403	001	RETAINER .....	2			
13	430098	091	BUSHING, Nylon .....	2			
14	462261	001	PIVOT WELDMENT .....	2			
15	430053	091	BUMPER, Rubber .....	2			
	462265	001	SWITCH HOLDER ASSEMBLY .....	1			
16	451234	045	• NUT, #4-40 Hex .....	2			
17	451231	091	• MICROSWITCH .....	1			
18	454899	001	• INSULATION, Switch .....	1			
19	454898	001	• HOLDER, Switch .....	1			
20	451908	045	• SCREW, #4-40 x 5/8 Slot-head Machine .....	2			
21	430064	045	SCREW, #8-32 x 3/8 Self-tapping .....	4			
22	79588	001	LOCKWASHER, #8 Internal Tooth .....	4			
23	452813	091	LOCK KIT .....	1			
24	426560	001	DOOR, Sliding .....	1			



Modified MEDI-STAT Medicine Station

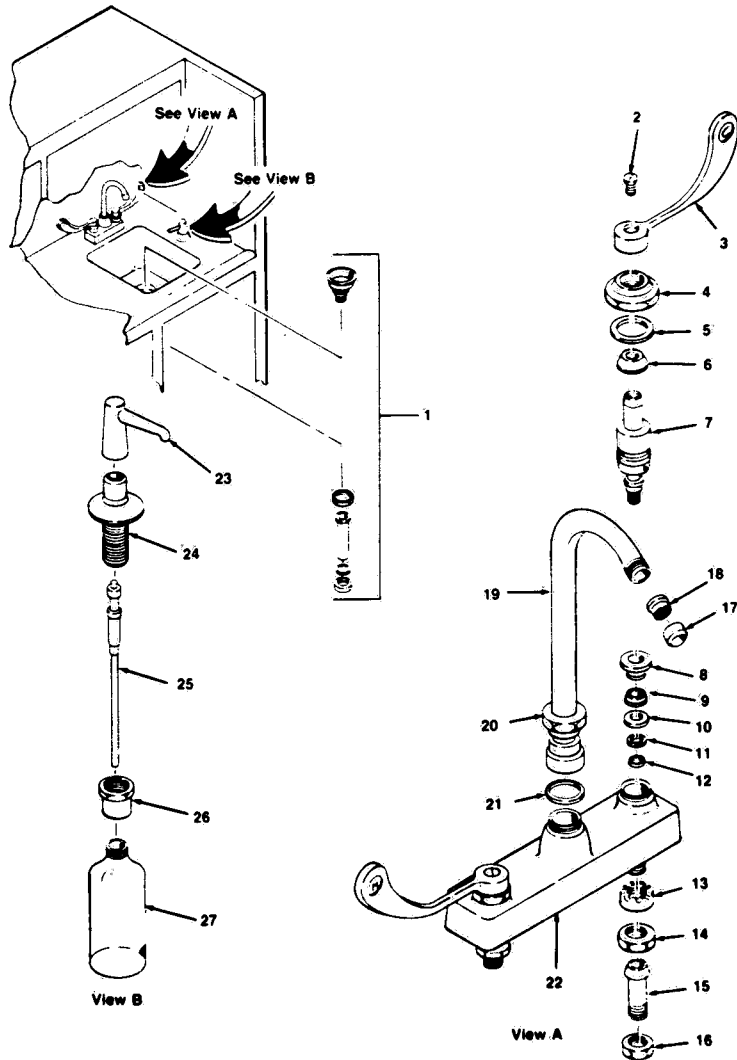


Figure 6-5. PLUMBING.

Modified MEDI-STAT Medicine Station

FIG. & INDEX NO.	PART NUMBER			DESCRIPTION	UNITS PER ASSEMBLY	
6-5-				PLUMBING .....	*	
1	P	430068	051	STRAINER WITH TAIL PIECE .....	1	
		422666	001	FAUCET .....	1	
2		422666	022	• SCREW/ Handle .....	2	
3		422666	005	• HANDLE, Cold .....	1	
		422666	004	• HANDLE, Hot (Not Shown) .....	1	
4		422666	006	• CAP .....	2	
5		422666	007	• WASHER .....	2	
6		422666	008	• PACKING .....	2	
7		422666	002	• SLEEVE, Right Hand .....	1	
		422666	003	• SLEEVE, Left Hand (Not Shown) .....	1	
8		422666	009	• SLAT .....	2	
9		422666	010	• WASHER .....	2	
10		422666	011	• RETAINER .....	2	
11		422666	023	• WASHER .....	2	
12		422666	024	• NUT .....	2	
13		422666	013	• LOCKWASHER, Basin .....	2	
14		422666	014	• LOCKNUT .....	2	
15		422666	015	• TAIL PIECE .....	2	
16		422666	016	• NUT, Coupling .....	2	
17		422666	019	• RETAINER, Softflo Outlet .....	1	
18		422666	020	• STRAINER, Softflo Outlet .....	1	
19		422666	021	• SPOUT .....	1	
20		422666	018	• NUT, Spout .....	1	
21		422666	017	• WASHER, Spout .....	1	
22		422666	012	• BODY, Shanks .....	1	
		412524	001	SOAP DISPENSER ASSEMBLY .....	1	
23		412524	002	• HEAD ASSEMBLY .....	1	
24		412524	003	• SUPPORT .....	1	
25		412524	004	• PUMP ASSEMBLY .....	1	
26		412524	005	• ADAPTER, Inlet .....	1	
27		412524	006	• BOTTLE, Plastic .....	1	

Modified MEDI-STAT Medicine Station

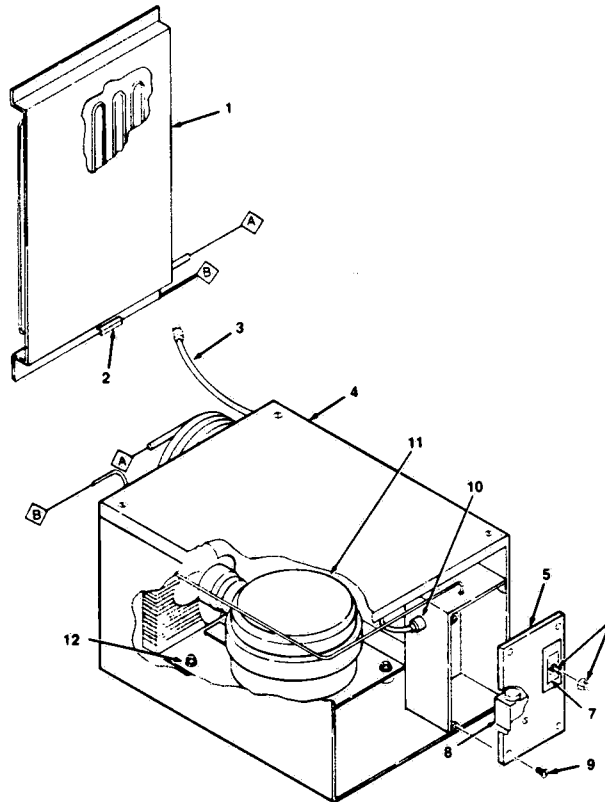


Figure 6-6. COMPRESSOR ASSEMBLY.

FIG. & INDEX NO.	PART NUMBER	DESCRIPTION	UNITS PER ASSEMBLY
6-6-	A 467802 091	COMPRESSOR ASSEMBLY .....	*
1	P 467746 091	EVAPORATOR .....	1
2	A 452317 091	CLAMP, Tubing .....	1
3	P 460798 091	CORD AND WIRE .....	1
4	M 460936 010	COVER, Compressor Assembly .....	1
5	M 452189 010	COVER, Housing .....	1
6	P 430332 091	THERMOSTAT .....	1
7	P 454480 001	PLATE, Dial .....	1
8	P 452229 091	TIMER .....	1
9		SCREW .....	4
10	P 452266 091	RECEPTACLE .....	1
11	P 430130 091	COMPRESSOR .....	1
12	P 430017 091	NUT, 1/4-20 Kep .....	4

Modified MEDI-STAT Medicine Station

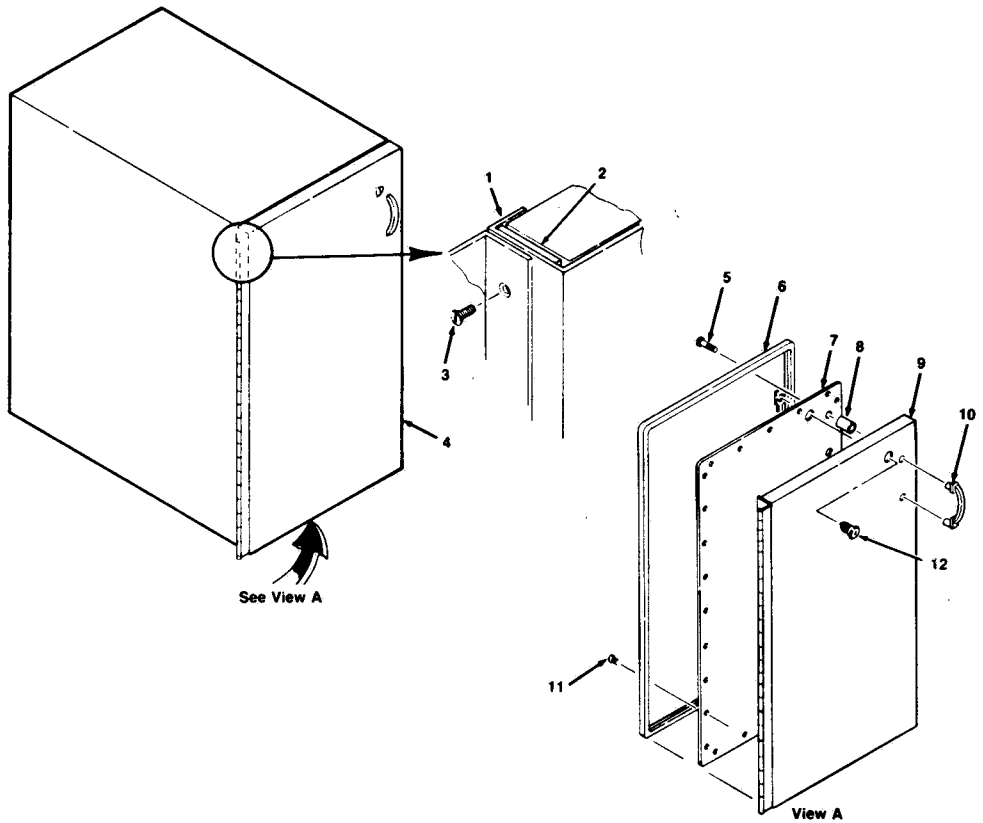


Figure 6-7. REFRIGERATOR.

FIG. & INDEX NO.	PART NUMBER			DESCRIPTION	UNITS PER ASSEMBLY			
6-7-	A	467736	091	REFRIGERATOR .....	*			
1		467736	091	WELDMENT. Refrigerator Liner .....	1			
2	M	452494	091	• HINGE .....	1			
3	P	430064	045	• SCREW .....	4			
4	M	465570	091	• DOOR ASSEMBLY .....	1			
5	P	451225	045	• • SCREW. 8-32 x 1-2/3 Phillips Head .....	2			
6	P	452487	091	• • GASKET .....	1			
7	M	452488	091	• • PLATE. Inside .....	1			
8	M	451216	091	• • SPACER .....	2			
9	A	462859	091	• • PAN WELDMENT. Outside .....	1			
10	P	430061	056	• • PULL .....	1			
11	P	430056	045	• • SCREW. 6-32 x 3/8 Oval-head Type I .....	13			
12		451276	056	• LOCK .....	1			



**AMSCO  
SERVICE**

**MEDI-STAT MEDICINE STATION MODIFIED**  
**48" Wide P-763619-002**

**9/77**

**1 of 1**

