



# Market Forge Sterilmatic

## Models: STM-E, STM-EL, STM-EX, STM-ELX

**Size:** 18-3/4" Wide x 27-5/8" High x 31" Deep  
Optional tubular leg stainless steel stand with shelf. 27-1/2" High. Overall height of Sterilmatic with Stand is 56" High.

**Description:** The Sterilmatic is a dependable, inexpensive, and ideally suited for laboratories, veterinary clinics, processing plants, and more.

**Cylinder:** Sterilizing cylinder will be 3/16" wall welded aluminum. Sterilizer exterior is made of polished stainless steel. Interior dimensions of 16" in diameter and 26" long with a cubic content of 5,220 cubic inches and will have a door opening of 13-1/2" wide and 11" high. Sterilizing compartment will have a capacity of : (3) 12"x20"x2-1/2" or, (2) 12"x20"x4" or, (1) 12"x20"x6".

**Door:** The sterilizer door will be self-sealing type which cannot be opened until steam pressure is completely exhausted. Door will be 12 gauge stainless steel, removable for cleaning without tools. Door gasket will be one piece molded, replaceable without tools or cement.

**Operation:** Sterilizing cycle will be fully automatic, time-controlled and have a built in temperature control which provides 250°F. Model STM-EL has the additional feature of an adjustable temperature control that can be set anywhere from 230°F-250°F range. All operating control will be located at the top, front of the sterilizer. Pressure will be automatically and quickly exhausted and power supply shut off at termination of cycle. Slow exhaust may be selected for sterilizing liquids.

**Electrical Requirements:** Unit will be rated at 12kW at 236V and will be equipped for operation at: 208-240V, 3 Wire, 1 Phase, 60 Hz or, 208-240V, 4 Wire, 3 Phase, 60 Hz or, 220V, 1 Phase, 50 Hz or, 220V, 3 Phase, 50 Hz.

**Standard Features:** Automatic temperature control, Thermometer 180°F-300°F. Safety valve, 0-30 lb. steam gauge, 0-60 minute timer, Low water cut off, Thermostatic steam trap, Signal light, Flat perforated steam baffle, Removable pan supports, and Adjustable 4"-6" bullet feet.



**Alfa Medical**

265 Post Ave Westbury, NY 11590  
Phone: 877-801-6371 Fax: 516-977-7434  
Europe (UK #): 44-203-411-9907 International: 516-301-5567



# Market Forge Sterilmatic

Models: STM-E, STM-EL, STM-EX, STM-ELX

Domestic Fixed Temperature Model: STM-E / Part Number 95-2678

Domestic Adjustable Temperature Model: STM-EL / Part Number 95-3441

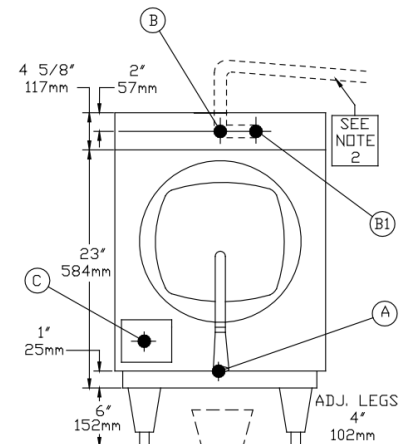
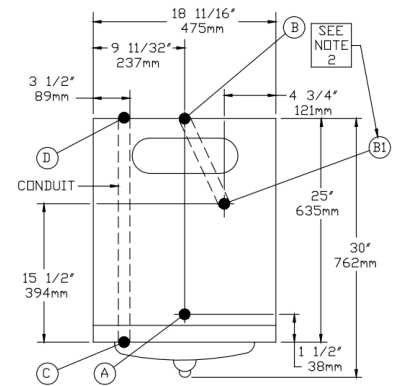
Export Fixed Temperature Model: STM-EX / Part Number 95-2902

Export Adjustable Temperature Model: STM-EXL / Part Number 95-2903

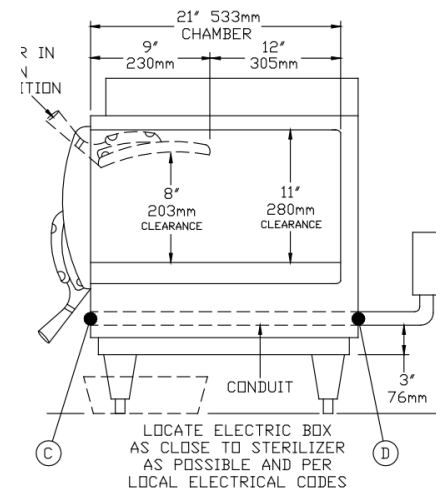
### REQUIRED CONNECTIONS:

A	Drain - 1/2" (13mm) N.P.T. of 5/8" (16mm) OD copper (see note 1)
B	Steam Exhaust Connection - 3/8" (10mm) IPS (see note 2)
C	Electrical Connection - (*see table below)
D	Power Supply

MODEL	*AMP/PHASE					
	kW	Hz	Single Phase		Three Phase	
			208V	240V	208V	240V
STM-E(L)	9	60	45A	52A	-	-
STM-EX(LX)	12	60	-	-	26A	30A



DRAIN CATCH PAN  
APPROX. 4-6 QUARTS 3.8-5.7 LITERS  
BY CUSTOMER



\*UNIT MUST BE GROUNDED

\*MAIN SUPPLY VOLTAGE FLUCTUATIONS ARE NOT TO EXCEED ±10 NOMINAL SUPPLY VOLTAGE

### NOTES:

1. An air break must be provided if a unit drain line is run.
2. Vent exhaust to atmosphere. B1 is actual connection, but must exit casing at B.

**IMPORTANT:** Exhaust line must be vented to the outside to eliminate the exhaust steam and the accompanying noise from entering the room. use 1/2" copper tubing or suitable alternate. The overall height and length of the line should not rise more than 4 ft above the unit and exceed 15 ft with a minimum of bends. The line should slope downward after leaving the sterilizer in order to ensure condensate drainage.

**IMPORTANT:** Failure to comply with this outline will affect the sterilization process.

When an exhaust condenser is supplied; the following services must be provided: 1/2" IPS cold water: 1" IPS waste: 115 V electrical line.

Alfa Medical

265 Post Ave Westbury, NY 11590

Phone: 877-801-6371 Fax: 516-977-7434

Europe (UK #): 44-203-411-9907 International: 516-301-5567